



## Sherry Rae Johnson

August 18, 1948 - December 8, 2023

In Memoriam: Sherry Johnson, 75, of Eden Prairie, Minnesota / Lecanto, FL. She was preceded in death by her parents, Larry and Dorthy Bonham.

It is with heavy hearts that we announce the passing of Sherry Rae Johnson, a cherished wife, mother, and dedicated community member.

Sherry was described as sweet, kind and caring by nearly everyone she met. She loved skiing, sunsets, dancing, exercise, and pancakes, but most important to her was her family and faith.

She is survived by her devoted husband of 51 years, Keith, and lovingly remembered by her sons, Ryan (Meghan) and Kevin (Allison); her cherished grandchildren, Brenna, Lauren, Alyssa, Ty, and Tanner; and sisters, Joannie Griesmann and Sandy McGown. Sherry was a caring mother and grandmother, raising her family with unwavering love and support.

Sherry's commitment to education led her to St. Catherine University, where she pursued and obtained her teaching degree. Her passion for nurturing young minds led her to a fulfilling career as an elementary school teacher. Later, she contributed significantly to the family's staffing business, earning a stellar reputation for genuine care and consideration for those she worked with.

Beyond her professional endeavors, Sherry dedicated over 15 years to serving as a hospice volunteer, exemplifying her boundless compassion. She was a beacon of leadership in various volunteer roles within her church and community, leaving an indelible mark on all she touched. Sherry extended her kindness globally, participating in several international mission trips.

A reviewal will be held at Washburn-McReavy in Edina from 9:30-11 am on December 13th, followed by a service at Meeting House Church, formally Colonial Church, in Edina at 12 pm. There will be a luncheon to follow. Her legacy of kindness, empathy, and selfless service will forever resonate in the hearts of those who were fortunate enough to know her.

In lieu of flowers, please donate to the Park Nicollet Foundation in support of Hospice. Visit:

[healthpartners.com/care/specialty/hospice/donate-form/](https://healthpartners.com/care/specialty/hospice/donate-form/)

# Cemetery Details

## Hillside Cemetery (Minneapolis)

2600 19th Ave NE  
Minneapolis, MN 55418

# Previous Events

## Visitation

DEC 13. 9:30 AM - 11:00 AM (CT)

Edina Chapel  
5000 West 50th & Highway 100  
Edina, MN 55436

## Church Service

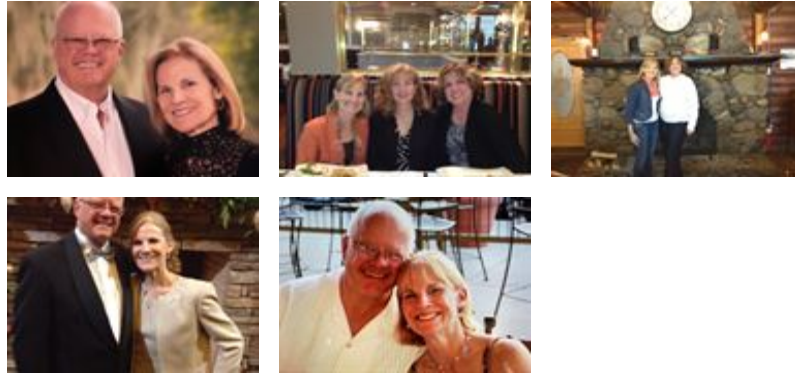
DEC 13. 12:00 PM - 1:00 PM (CT)

Meetinghouse Church  
6200 Colonial Way  
Edina, MN 55436

# Tribute Wall



“ 52 files added to the album Life Tributes



Washburn-McReavy - December 12, 2023 at 11:45 AM



“ In loving memory of Sherry, whose grace, warmth and unwavering support touched the hearts of our Minneapolis City of Lakes Rotary community. Our heartfelt condolences to Keith and family.

Maria Bavender - December 11, 2023 at 03:17 PM



“ Keith, Ryan and Kevin...  
My heart aches for your loss..great memories from our time as next door neighbors...  
Ken & Mary Miller

mary miller - December 09, 2023 at 09:38 AM