



Phyllis G. "Phyl" Roisum

January 27, 2013

Roisum, Phyllis G. "Phyl" Dec. 10, 1923 - Jan. 27, 2013. Preceded in death by husband, Earl; sons, Robert and Lee. Survived by her grandsons, Craig and Wes; great-grandson, Justin; daughter-in-law, Sharon; and many relatives and friends. Phyllis was a gracious and classy lady, singing in Sweet Adelines with her quartet. She loved golf and bridge and was an avid Viking fan. Phyllis was loved and will be greatly missed by all who knew her. Interment Crystal Lake Cemetery. Memorial service 11 AM Monday, Feb. 4 with visitation 1 hour before service all at: www.Washburn-McReavy.com Crystal Lake Chapel 612-521-3677 Penn & Dowling Aves. North.

Cemetery Details

Crystal Lake Cemetery

3816 Penn Avenue North
Minneapolis, MN 55412
(612) 521-7619
info@washburn-mcreavy.com

Previous Events

Visitation

FEB 4. 10:00 AM - 11:00 AM (CT)

Crystal Lake Chapel
3816 Penn Avenue N.
Minneapolis, MN 55412
(612) 521-3677
info@washburn-mcreavy.com

Service

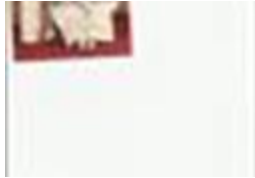
FEB 4. 11:00 AM (CT)

Crystal Lake Chapel
3816 Penn Avenue N.
Minneapolis, MN 55412
(612) 521-3677
info@washburn-mcreavy.com

Tribute Wall

JS

“ 1 file added to the tribute wall



Jean Stibal - February 03, 2013 at 12:12 PM

PQ

“ *Phyl was a dear friend. We sang in quartets together. I will really miss her. Another Phyl, Phyl Quigley*



Phyl Quigley - February 02, 2013 at 05:33 PM